

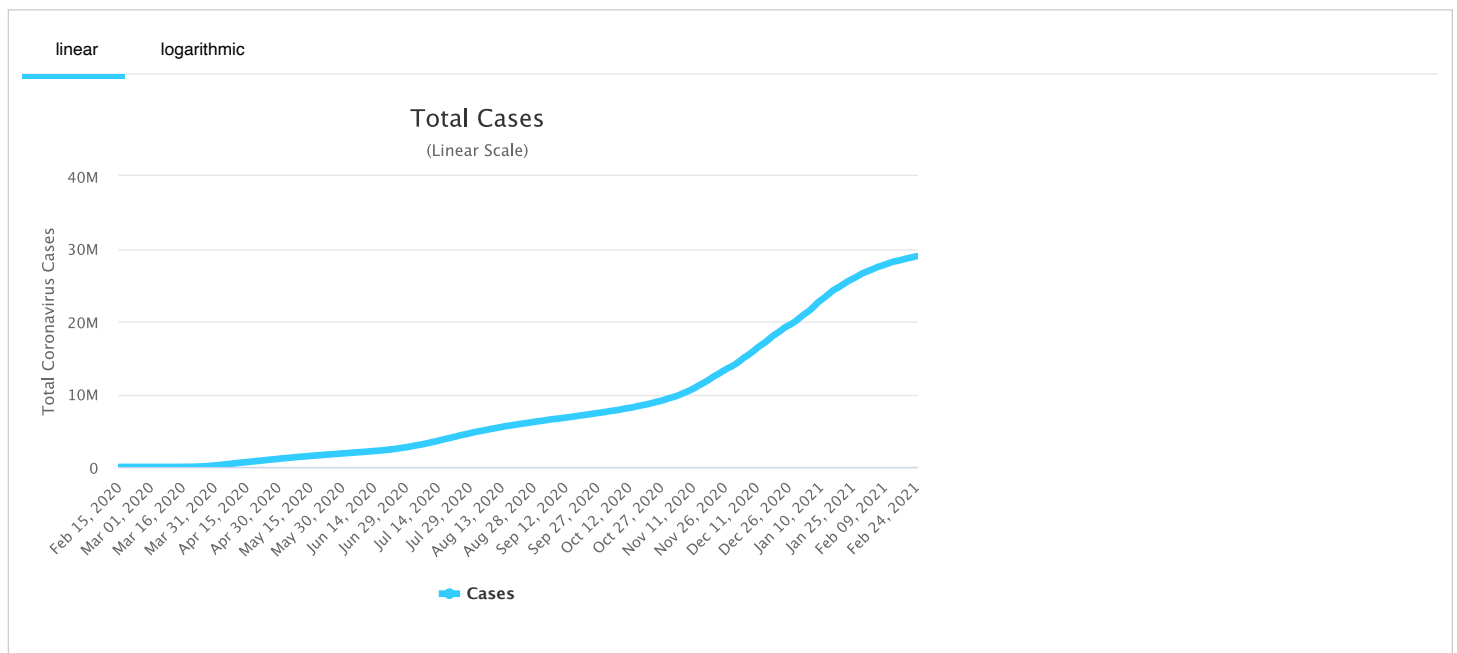
#	USA State ↑↓	Total Cases ↓↑	New Cases ↑↓	Total Deaths ↑↓	New Deaths ↑↓	Total Recovered ↑↓	Active Cases ↑↓	Tot Cases/ 1M pop ↑↓	Deaths/ 1M pop ↑↓	Total Tests
	USA Total	28,974,623		518,363		19,340,329	9,115,931	87,536	1,566	352,5
1	<b><u>California</u></b> <b><u>(/coronavirus/usa/california/)</u></b>	3,534,791		50,993		1,834,252	1,649,546	89,461	1,291	47,6
2	<b><u>Texas</u></b> <b><u>(/coronavirus/usa/texas/)</u></b>	2,629,163		43,131		2,383,959	202,073	90,674	1,487	22,6
3	<b><u>Florida</u></b> <b><u>(/coronavirus/usa/florida/)</u></b>	1,885,661		30,354		1,084,723	770,584	87,796	1,413	21,3
4	<b><u>New York</u></b> <b><u>(/coronavirus/usa/new-york/)</u></b>	1,647,482		47,385		707,295	892,802	84,688	2,436	36,9
5	<b><u>Illinois</u></b> <b><u>(/coronavirus/usa/illinois/)</u></b>	1,179,342		22,575		1,064,836	91,931	93,068	1,782	17,8
6	<b><u>Georgia</u></b> <b><u>(/coronavirus/usa/georgia/)</u></b>	994,061		17,064		465,942	511,055	93,625	1,607	7,5
7	<b><u>Ohio</u></b> <b><u>(/coronavirus/usa/ohio/)</u></b>	959,995		17,045		897,425	45,525	82,127	1,458	9,8

#	USA State	Total Cases	New Cases	Total Deaths	New Deaths	Total Recovered	Active Cases	Tot Cases/ 1M pop	Deaths/ 1M pop	Total Tests
8	<a href="#">Pennsylvania (/coronavirus/usa/pennsylvania/)</a>	925,662		23,894		828,570	73,198	72,306	1,866	10,1
9	<a href="#">North Carolina (/coronavirus/usa/north-carolina/)</a>	849,630		11,074		795,521	43,035	81,009	1,056	10,0
10	<a href="#">Arizona (/coronavirus/usa/arizona/)</a>	811,968		15,693		114,855	681,420	111,554	2,156	4,1
11	<a href="#">New Jersey (/coronavirus/usa/new-jersey/)</a>	775,386		23,077		505,944	246,365	87,297	2,598	10,4
12	<a href="#">Tennessee (/coronavirus/usa/tennessee/)</a>	768,946		11,266		743,254	14,426	112,597	1,650	6,7
13	<a href="#">Indiana (/coronavirus/usa/indiana/)</a>	658,043		12,467		430,126	215,450	97,745	1,852	7,8
14	<a href="#">Michigan (/coronavirus/usa/michigan/)</a>	641,270		16,389		529,080	95,801	64,211	1,641	10,7
15	<a href="#">Massachusetts (/coronavirus/usa/massachusetts/)</a>	573,885		15,945		524,608	33,332	83,262	2,313	15,7
16	<a href="#">Virginia (/coronavirus/usa/virginia/)</a>	568,946		7,807		46,208	514,931	66,656	915	7,3
17	<a href="#">Wisconsin (/coronavirus/usa/wisconsin/)</a>	561,311		6,342		546,408	8,561	96,405	1,089	3,1
18	<a href="#">Missouri (/coronavirus/usa/missouri/)</a>	520,389		8,485		297,924	213,980	84,789	1,383	5,3
19	<a href="#">South Carolina (/coronavirus/usa/south-carolina/)</a>	509,044		8,398		N/A	N/A	98,868	1,631	5,7
20	<a href="#">Alabama (/coronavirus/usa/alabama/)</a>	490,220		9,744		275,245	205,231	99,980	1,987	2,3
21	<a href="#">Minnesota (/coronavirus/usa/minnesota/)</a>	480,845		6,511		467,969	6,365	85,262	1,155	7,2
22	<a href="#">Louisiana (/coronavirus/usa/louisiana/)</a>	426,925		9,528		408,463	8,934	91,836	2,050	5,8
23	<a href="#">Colorado (/coronavirus/usa/colorado/)</a>	423,558		5,917		212,837	204,804	73,551	1,027	2,5
24	<a href="#">Oklahoma (/coronavirus/usa/oklahoma/)</a>	421,010		4,264		403,159	13,587	106,397	1,078	3,4
25	<a href="#">Kentucky (/coronavirus/usa/kentucky/)</a>	400,307		4,527		47,225	348,555	89,601	1,013	4,4
26	<a href="#">Maryland (/coronavirus/usa/maryland/)</a>	378,490		7,789		9,626	361,075	62,605	1,288	7,7
27	<a href="#">Utah (/coronavirus/usa/utah/)</a>	368,601		1,879		347,721	19,001	114,974	586	3,7

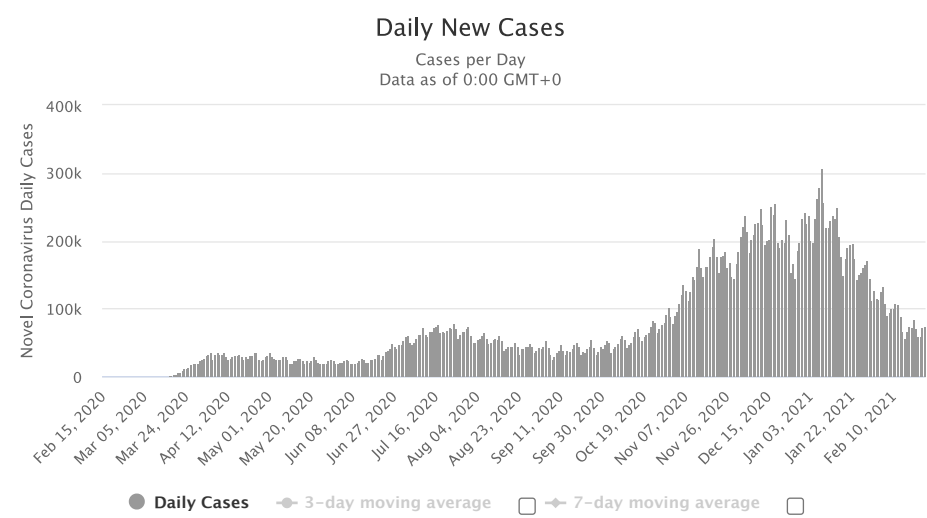
#	USA State	Total Cases	New Cases	Total Deaths	New Deaths	Total Recovered	Active Cases	Tot Cases/ 1M pop	Deaths/ 1M pop	Total Tests
28	<a href="#">Iowa (/coronavirus/usa/iowa/)</a>	361,209		5,415		311,666	44,128	114,485	1,716	3,9
29	<a href="#">Washington (/coronavirus/usa/washington/)</a>	339,841		4,990		166,474	168,377	44,628	655	5,1
30	<a href="#">Arkansas (/coronavirus/usa/arkansas/)</a>	317,396		5,387		307,306	4,703	105,174	1,785	3,0
31	<a href="#">Kansas (/coronavirus/usa/kansas/)</a>	295,425		4,724		N/A	N/A	101,405	1,622	1,2
32	<a href="#">Nevada (/coronavirus/usa/nevada/)</a>	292,059		4,919		231,592	55,548	94,820	1,597	2,6
33	<a href="#">Mississippi (/coronavirus/usa/mississippi/)</a>	291,891		6,605		273,437	11,849	98,077	2,219	2,4
34	<a href="#">Connecticut (/coronavirus/usa/connecticut/)</a>	278,184		7,595		96,323	174,266	78,026	2,130	6,5
35	<a href="#">Nebraska (/coronavirus/usa/nebraska/)</a>	199,782		2,054		153,585	44,143	103,278	1,062	9
36	<a href="#">New Mexico (/coronavirus/usa/new-mexico/)</a>	183,781		3,658		137,250	42,873	87,647	1,745	2,6
37	<a href="#">Idaho (/coronavirus/usa/idaho/)</a>	170,289		1,840		93,252	75,197	95,290	1,030	1,0
38	<a href="#">Oregon (/coronavirus/usa/oregon/)</a>	154,062		2,194		N/A	N/A	36,527	520	3,5
39	<a href="#">West Virginia (/coronavirus/usa/west-virginia/)</a>	130,382		2,285		120,030	8,067	72,752	1,275	2,1
40	<a href="#">Rhode Island (/coronavirus/usa/rhode-island/)</a>	124,718		2,487		7,648	114,583	117,729	2,348	2,9
41	<a href="#">South Dakota (/coronavirus/usa/south-dakota/)</a>	111,808		1,864		108,053	1,891	126,385	2,107	4
42	<a href="#">North Dakota (/coronavirus/usa/north-dakota/)</a>	99,531		1,440		97,389	702	130,607	1,890	4
43	<a href="#">Montana (/coronavirus/usa/montana/)</a>	99,242		1,348		96,040	1,854	92,856	1,261	1,0
44	<a href="#">Delaware (/coronavirus/usa/delaware/)</a>	85,506		1,402		N/A	N/A	87,810	1,440	6
45	<a href="#">New Hampshire (/coronavirus/usa/new-hampshire/)</a>	74,258		1,157		70,318	2,783	54,613	851	1,6
46	<a href="#">Alaska (/coronavirus/usa/alaska/)</a>	55,736		287		N/A	N/A	76,189	392	1,6
47	<a href="#">Wyoming (/coronavirus/usa/wyoming/)</a>	53,988		671		52,679	638	93,282	1,159	6

#	USA State	Total Cases	New Cases	Total Deaths	New Deaths	Total Recovered	Active Cases	Tot Cases/ 1M pop	Deaths/ 1M pop	Total Tests
48	<a href="#">Maine (/coronavirus/usa/maine/)</a>	43,900		677		12,779	30,444	32,659	504	1,8
49	<a href="#">District Of Columbia (/coronavirus/usa/district-of-columbia/)</a>	39,943		1,001		28,603	10,339	56,597	1,418	1,2
50	<a href="#">Hawaii (/coronavirus/usa/hawaii/)</a>	27,320		435		N/A	N/A	19,296	307	1,0
51	<a href="#">Vermont (/coronavirus/usa/vermont/)</a>	14,768		201		11,998	2,569	23,667	322	1,0
52	Puerto Rico	178,266		2,007		89,496	86,763	52,633	593	4
53	Guam	7,729		130		7,555	44			1
54	United States Virgin Islands	2,623		25		2,497	101			
55	Northern Mariana Islands	143		2		N/A	N/A			
56	American Samoa	3				3	0			
57	US Military	245,957		293		175,438	70,226			
58	Veteran Affairs	225,797		10,342		209,925	5,530			2,7
59	Federal Prisons	54,382		226		50,976	3,180			1
60	Navajo Nation	29,602		1,152		16,021	12,429			2
61	Grand Princess Ship	122		7		115	0			
62	Wuhan Repatriated	3				3	0			
63	Diamond Princess Ship	46				46	0			
	<b>Total:</b>	<b>28,974,623</b>		<b>518,363</b>		<b>19,340,329</b>	<b>9,115,931</b>	<b>87,536</b>	<b>1,566</b>	<b>352,5</b>

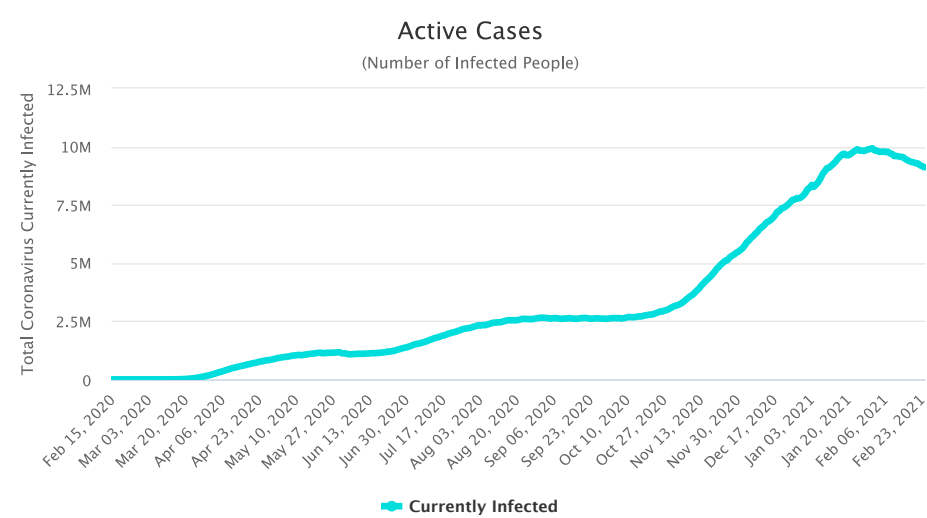
## Total Coronavirus Cases in the United States



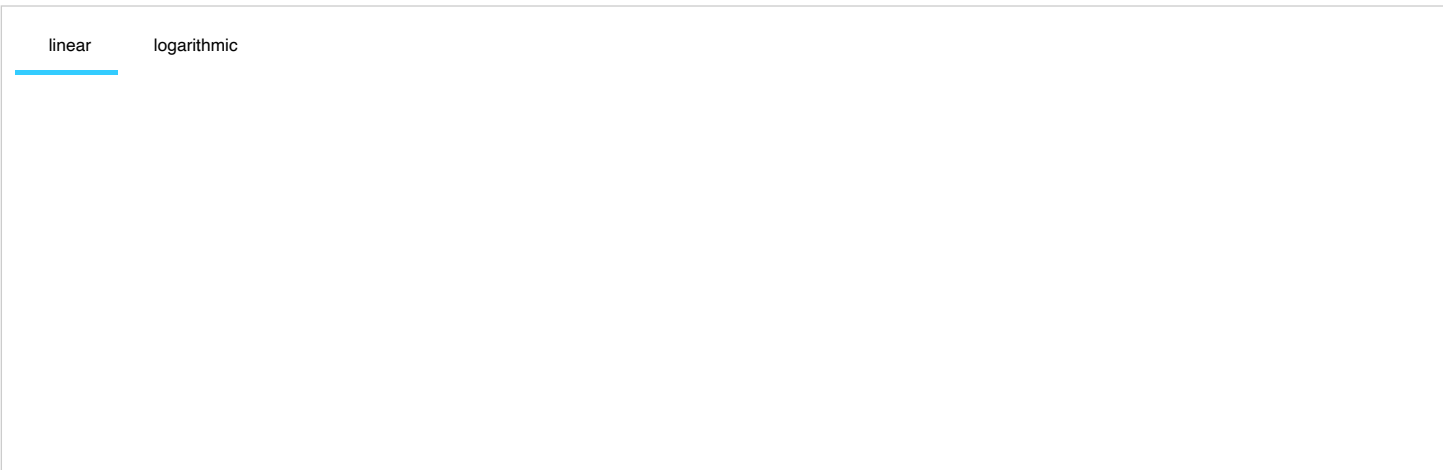
## Daily New Cases in the United States

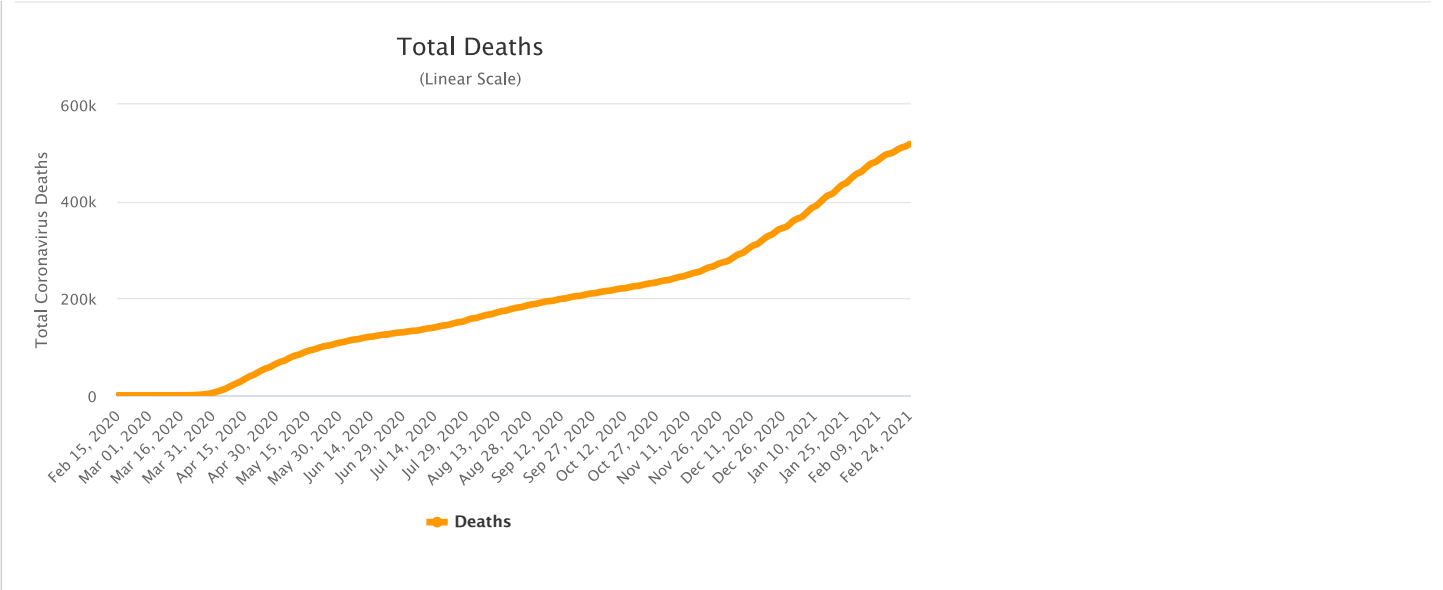


## Active Cases in the United States

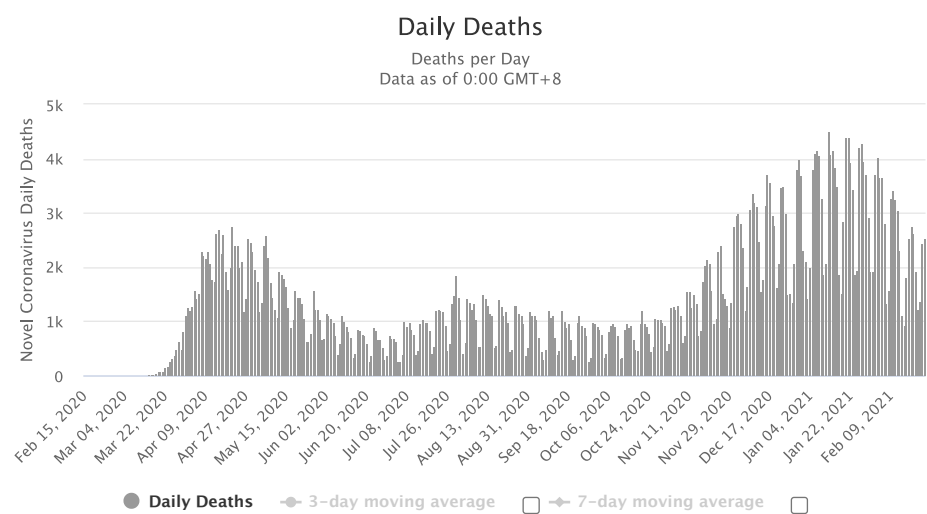


## Total Coronavirus Deaths in the United States





## Daily New Deaths in the United States



## Latest News

February 24 (GMT)

### Updates

- 75,299 new cases and 2,525 new deaths in [the United States \(/coronavirus/country/us/\)](#)

February 23

February 22

February 21

February 20

February 19

May 14

May 8

View More News

# Historical account of the initial stages of the epidemic in the United States

Content:

- First 20 cases in the United States
- Progression of first suspected cases
- Timeline of initial events
- Sources for the historical account

## First 20 cases in the United States

Information collected on the first 20 domestic cases (not including repatriated cases and Diamond Princess cruise ship evacuee cases) is presented in the table below:

State	Cases	Sex	Age	Date	Case #	Location	Source
Oregon	1			Feb. 29	17 <sup>th</sup>	Washington C.	
Washington	2			Feb. 29	18, 19 <sup>th</sup>		
	1	M	30s	Jan. 21	1 <sup>st</sup>	Snohomish	[7]
Illinois	1			Mar. 1	20 <sup>th</sup>		
	1	M	60s	Jan. 30	6 <sup>th</sup>	Chicago	[12]
	1	F	60s	Jan. 24	2 <sup>nd</sup>	Chicago	[8]
California	2	unkn.	unkn.	Jan. 26	3 <sup>rd</sup> , 4 <sup>th</sup>	Orange C., L.A.	[9]
	1	M	adult	Jan. 31	7 <sup>th</sup>	Santa Clara C.	[17][18]
	1	F	unkn.	Feb. 2	9 <sup>th</sup>	Santa Clara C.	
	1	M	57	Feb. 2	10 <sup>th</sup>	San Benito C.	
	1	F	57	Feb. 2	11 <sup>th</sup>	San Benito C.	
	1		65	Feb. 28	16 <sup>th</sup>	Santa Clara C.	
	1			Feb. 21	13 <sup>th</sup>	Humboldt C.	
	1			Feb. 21	14 <sup>th</sup>	Sacramento C.	
	1			Feb. 26	15 <sup>th</sup>	[Northern California]	
Massachusetts	1	M	20s	Feb. 1	8 <sup>th</sup>	Boston	[16]
Arizona	1	unkn.	student	Jan. 26	5 <sup>th</sup>	Maricopa County	
Wisconsin	1			Feb. 5	12 <sup>th</sup>	Madison	

# Patients Under Investigation (PUI) in the United States

CDC in the early stages released information regarding the number of cases and people under investigation that was updated regularly on Mondays, Wednesdays, and Fridays. Below we provide the historical reports that we were able to gather in order to track the progression in the number of suspected cases and US states involved through time in the initial stages

As of Feb. 10:

<i>Number of U.S. States with PUI</i>	<i>36</i>
<b>Positive</b>	<b>12</b>
Negative	318
<b>Pending</b> (specimens awaiting testing)	<b>68</b>
<b>TOTAL</b>	<b>398</b>

As of Feb. 7:

<i>Number of U.S. States with PUI</i>	<i>36</i>
<b>Positive</b>	<b>12</b>
Negative	225
<b>Pending</b> (specimens awaiting testing)	<b>100</b>
<b>TOTAL</b>	<b>337</b>

As of Feb. 5:

<i>Number of U.S. States with PUI</i>	<i>36</i>
<b>Positive</b>	<b>11</b>
Negative	206
<b>Pending</b> (specimens awaiting testing)	<b>76</b>
<b>TOTAL</b>	<b>293</b>

As of Feb. 3:

<i>Number of U.S. States with PUI</i>	<i>36</i>
<b>Positive</b>	<b>11</b>
Negative	167
<b>Pending</b> (specimens awaiting testing)	<b>82</b>
<b>TOTAL</b>	<b>260</b>

As of January 31:

<i>Number of U.S. States with PUI</i>	<i>36</i>
<b>Positive</b>	<b>6</b>
Negative	114
<b>Pending</b> (specimens awaiting testing)	<b>121</b>
<b>TOTAL</b>	<b>241</b>

Previously, as of January 29, there were 92 suspected cases awaiting testing.

<i>Number of U.S. States with PUI</i>	<i>36</i>
---------------------------------------	-----------



<b>Positive</b> of U.S. States with PUI	<b>35</b>
---	-----------

<b>Positive</b>	<b>5</b>
Negative	68
<b>Pending</b> (specimens awaiting testing)	<b>92</b>
<b>TOTAL</b>	<b>165</b>

## Timeline of Events

- ▲ On January 31, HHS declared Coronavirus a Public Health Emergency in the US (<https://www.hhs.gov/about/news/2020/01/31/secretary-azar-declares-public-health-emergency-us-2019-novel-coronavirus.html>)  
 As of Jan. 31, the Wuhan coronavirus is officially a public health emergency in the United States, Alex Azar, secretary of the US Department of Health and Human Services (HHS), announced at a White House press briefing.
- ▲ On Jan. 31, the U.S. Centers for Disease Control and Prevention (CDC) **issued a federal quarantine for 14 days** affecting the 195 American evacuees from Wuhan, China. Starting Sunday, Feb. 2, U.S. citizens, permanent residents and immediate family who have visited China's Hubei province will undergo a **mandatory 14 days quarantine** and, if they have visited other parts of China, they would be screened at airports and asked to self-quarantine for 14 days. The last time the CDC had issued a quarantine was over 50 years ago in the 1960s, for smallpox.
- ▲ President Donald Trump signed an order on Jan. 31 for the U.S. to **deny entry to foreign nationals who traveled to China** within the preceding two weeks, aside from the immediate family of U.S. citizens.
- On Jan. 30, the CDC had confirmed the **first case of person to person transmission in the U.S.:** <sup>[12]</sup> the husband of the Chicago, Illinois case who had returned from Wuhan, China on Jan. 13 and who tested positive for the virus on Jan. 24).
- CDC stated on Jan. 30 that "It is likely there will be more cases of 2019-nCoV reported in the U.S. in the coming days and weeks, including more person-to-person spread."<sup>[12]</sup>
- The virus had been confirmed in **5 states**.
- On Jan. 31, **New York City** health officials vehemently denied the rumor regarding a coronavirus case in the city <sup>[13]</sup>. On Feb. 1, however, the city's health commissioner did report that there was a test being performed on a person under 40 who had returned from China, developed matching symptoms, and tested negative to the seasonal flu.
- Most US patients had recently visited Wuhan.**
- All of the first five U.S. cases were described as **mild**.
- A study on the first US case of novel coronavirus detailed mild symptoms followed by pneumonia ([https://www.cnn.com/2020/01/31/health/washington-coronavirus-study-nejm/index.html?utm\\_term=link&utm\\_medium=social&utm\\_content=2020-02-01T00](https://www.cnn.com/2020/01/31/health/washington-coronavirus-study-nejm/index.html?utm_term=link&utm_medium=social&utm_content=2020-02-01T00))

## U.S. Airlines suspended ALL flights between the U.S. and China

On Friday, January 31, Delta, American and United announced they would temporarily suspend all of their mainland China flights in response to the coronavirus outbreak.<sup>[14]</sup>

Prior to this January 31 announcement:

- UNITED AIRLINES**  
 on Jan. 28 had announced it would cut 24 flights between the U.S. and China for the first week of February.
- AMERICAN AIRLINES**  
 on Jan. 29 had announced it would suspend flights from Los Angeles to Shanghai and Beijing from Feb. 9 through March 27, 2020. It will maintain its flight schedules (10 daily A/R) from Dallas-Fort Worth to Shanghai and Beijing, as well as from Los Angeles and Dallas-Fort Worth to Hong Kong.
- DELTA**  
 had not adjusted its schedule of direct flights from the U.S. to China. It is the only airline with direct flights to not take action so far.

The White House was considering issuing a ban on flights between the United States and China, as of late Jan. 28<sup>[11]</sup>. Italy has announced on January 31 that it was suspending all flights to and from China following the first 2 cases of coronavirus in Italy.

## Travel Alert: Do Not Travel to China

- The U.S. State Department on January 30 issued a **Level 4: Do Not Travel to China Alert** (<https://travel.state.gov/content/travel/en/traveladvisories/traveladvisories/china-travel-advisory.html>) <sup>[4]</sup> (the highest level of alert).
- Previously, on January 29, the advisory was set at a lower "Level 3: Reconsider Travel" advising not to travel to Hubei Province: (Level 4) and reconsider travel to the remainder of China (Level 3).
- The CDC on Jan. 28 issued a Level 3 Warning (<https://wwwnc.cdc.gov/travel/notices/warning/novel-coronavirus-china>), recommending that travelers **avoid all nonessential travel to China** <sup>[5]</sup>.

## Screening incoming passengers at 20 airports in the U.S.

On January 17, the CDC announced that 3 airports in the United States would begin screening incoming passengers from China: SFO, JFK, and LAX <sup>[6]</sup> Other 2 airports were added subsequently, and on January 28, the U.S. Department of Health and Human Services (HHS) announced that 15 additional U.S. airports (bringing the total to 20) would begin screening incoming travelers from China.

Below is the complete list of airports where screening for the 2019 Novel Coronavirus (2019-nCoV) is in place:

- Los Angeles International (LAX)
- San Francisco International (SFO)
- Chicago O'Hare
- New York JFK
- Atlanta Hartsfield-Jackson International
- Houston George Bush Intercontinental
- Dallas-Fort Worth International
- San Diego International
- Seattle-Tacoma International
- Honolulu International
- Anchorage Ted Stevens International
- Minneapolis-St. Paul International
- Detroit Metropolitan
- Miami International
- Washington Dulles International
- Philadelphia International
- Newark Liberty International
- Boston Logan International
- El Paso International
- Puerto Rico's San Juan Airport

## Sources for the historical account

1. Novel Coronavirus (2019-nCoV) situation reports (<https://www.who.int/emergencies/diseases/novel-coronavirus-2019/situation-reports/>) - World Health Organization (<https://www.who.int/>) (WHO)
2. 2019 Novel Coronavirus (2019-nCoV) in the U.S (<https://www.cdc.gov/coronavirus/2019-ncov/cases-in-us.html>) - U.S. Centers for Disease Control and Prevention (<https://www.cdc.gov/>) (CDC)
3. Symptoms of Novel Coronavirus (2019-nCoV) (<https://www.cdc.gov/coronavirus/2019-ncov/about/symptoms.html>) - CDC
4. China Travel Advisory (<https://travel.state.gov/content/travel/en/traveladvisories/traveladvisories/china-travel-advisory.html>) - U.S. State Department, accessed January 31, 2020.

5. Novel Coronavirus in China - Warning - Level 3, Avoid Nonessential Travel (<https://wwwnc.cdc.gov/travel/notices/warning/novel-coronavirus-china>) - CDC, January 28, 2020.
6. Public Health Screening to Begin at 3 U.S. Airports for 2019 Novel Coronavirus ("2019-nCoV") (<https://www.cdc.gov/media/releases/2020/p0117-coronavirus-screening.html>) - CDC January 17, 2020
7. First Travel-related Case of 2019 Novel Coronavirus Detected in United States (<https://www.cdc.gov/media/releases/2020/p0121-novel-coronavirus-travel-case.html>) - CDC, January 21, 2020
8. Second Travel-related Case of 2019 Novel Coronavirus Detected in United States (<https://www.cdc.gov/media/releases/2020/p0124-second-travel-coronavirus.html>) - CDC, January 24, 2020
9. CDC confirms additional cases of 2019 Novel Coronavirus in United States (<https://www.cdc.gov/media/releases/2020/s0126-coronavirus-new-cases.html>) - CDC, January 26, 2020
10. 2019 Novel Coronavirus (2019-nCoV) in the U.S. (<https://www.cdc.gov/coronavirus/2019-ncov/cases-in-us.html>) - CDC, Updated January 29, 2020
11. White House considers ban on flights to China amid coronavirus outbreak (<https://eu.usatoday.com/story/travel/news/2020/01/28/white-house-considers-ban-china-flights-amid-coronavirus-outbreak/4602839002/>) - USA Today, Jan. 28, 2020
12. CDC Confirms Person-to-Person Spread of New Coronavirus in the United States (<https://www.cdc.gov/media/releases/2020/p0130-coronavirus-spread.html>) - CDC Press Release, Jan. 30, 2020
13. NYC Officials Deny Report Of Coronavirus Amid Confusion (<https://www.forbes.com/sites/sergeiklebnikov/2020/01/31/nyc-officials-deny-report-of-coronavirus-amid-confusion/#351e47b5652c>) - Forbes, Jan. 31, 2020
14. Delta, American, United to suspend all China mainland flights as coronavirus crisis grows (<https://eu.usatoday.com/story/travel/2020/01/31/coronavirus-china-flight-ban-delta-cuts-all-flights-white-house/4620989002/>) - USA Today, Jan. 31, 2020
15. Secretary Azar Declares Public Health Emergency for United States for 2019 Novel Coronavirus (<https://www.hhs.gov/about/news/2020/01/31/secretary-azar-declares-public-health-emergency-us-2019-novel-coronavirus.html>) - U.S. Department of Health and Human Services (HHS), Jan. 31, 2020
16. Man returning from Wuhan, China is first case of 2019 Novel Coronavirus confirmed in Massachusetts (<https://www.mass.gov/news/man-returning-from-wuhan-china-is-first-case-of-2019-novel-coronavirus-confirmed-in>) - Massachusetts Department of Public Health, Feb. 1, 2020
17. County of Santa Clara Public Health Department Reports First Case of Novel (new) Coronavirus (<https://www.sccgov.org/sites/phd/news/Pages/novel-coronavirus-1-31-2020.aspx>) - Santa Clara County Public Health, Jan. 31, 2020
18. Coronavirus: First case confirmed in Santa Clara County (<https://www.mercurynews.com/2020/01/31/santa-clara-coronavirus/>) - Mercury News, Jan. 31, 2020

## Countries:

- **China** (</coronavirus/country/china/>)
- **South Korea** (</coronavirus/country/south-korea/>)
- **Iran** (</coronavirus/country/iran/>)
- **Italy** (</coronavirus/country/italy/>)
- **Spain** (</coronavirus/country/spain/>)
- **France** (</coronavirus/country/france/>) (</coronavirus/country/france/>)
- **United States** (</coronavirus/country/us/>)

## Coronavirus Worldometer Sections:

- **Coronavirus Update** (</coronavirus/>)
- **Cases** (</coronavirus/coronavirus-cases/>)
- **Deaths** (</coronavirus/coronavirus-death-toll/>)
- **Mortality Rate** (</coronavirus/coronavirus-death-rate/>)
- **Transmission Rate** (</coronavirus/#repro>)
- **Incubation Period** (</coronavirus/coronavirus-incubation-period/>)
- **Age, Sex, Demographics** (</coronavirus/coronavirus-age-sex-demographics/>)
- **Symptoms** (</coronavirus/coronavirus-symptoms/>)
- **Countries with cases: basic list** (</coronavirus/countries-where-coronavirus-has-spread/>) - **detailed list** (</coronavirus/#countries>)
- **Expert Opinions** (</coronavirus/coronavirus-expert-opinions/>)
- **Cases in the US** (</coronavirus/usa-coronavirus/>)

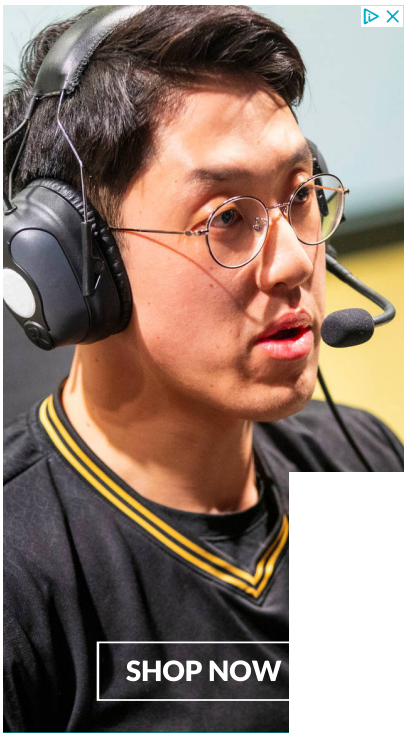
Kauai Coffee Estate Reserve Red  
Catuai | Kauai Coffee Company

\$36




[Shop now!](#)

**KAUAI**  
COFFEE



SHOP NOW

**ZIENN**




ZENNI®

**Blokz™**  
by ZENNI®

Blue light lenses  
Starting at **\$16.95**

**SHOP**



SHOP NOW

ZENN

A vertical advertisement for Kauai Coffee. At the top, the text 'Kauai Coffee Estate Reserve Mundo Novo | Kauai Coffee Company' is displayed in a bold, black, sans-serif font. Below this, the price '\$19' is shown in a large, bold, black font. The central image is a brown paper bag of 'Kauai Coffee Estate Reserve Mundo Novo' coffee. The bag features a logo with 'KAUAI COFFEE' and a line drawing of a plantation house. Below the drawing, it says 'ESTATE RESERVE', 'Mundo Novo', and 'Dark Roast'. At the bottom of the bag, it indicates '100% Arabica Coffee' and '0.15lb'. Below the coffee bag, there is a dark grey rectangular button with the word 'Shop' in white, bold, sans-serif font. At the very bottom, the 'KAUAI COFFEE' logo is partially visible, with 'KAUAI' in orange and 'COFFEE' in red.



---

worldometer (/)

[about \(/about/\)](#) | [faq \(/faq/\)](#) | [languages \(/languages/\)](#) | [contact \(/contact/\)](#) | [report coronavirus cases \(/report\\_us/\)](#)



[\(/newsletter-subscribe/\)](#)



[\(/https://twitter.com/Worldometers\)](https://twitter.com/Worldometers)



[\(/https://www.facebook.com/Worldometers.info\)](https://www.facebook.com/Worldometers.info)